



K-SERIES K500 | K500hi UV PRINTING PRESS



The best large format UV printing press – period!



QUALITY.

Unsurpassed Quality — Revolutionizing the large-format UV flatbed and hybrid market, the K-Series printing presses boast an unheard of 3.5 picoliter drop size. This super-fine drop results in producing the absolute highest quality prints ever seen in the industry.



PERFORMANCE.

Unparalleled Performance — Utilizing the 4.25" wide Kyocera true grayscale print head, the K-Series images ultra high quality prints at speeds up to 800 ft²/hr. With this unsurpassed combination of quality and speed, the K-Series printers can output up to *twenty-five* 4'x8' boards per hour!



AFFORDABILITY.

Unbelievably Priced — When compared to similar printers in the market, the K-Series line of printing presses feature a considerably lower initial investment cost along with lower long-term operational costs. This adds up to a much shorter return on your investment, allowing profits to start growing sooner.

K500 UV Flatbed

5'x10' MAX. MEDIA AREA

The K500 is ideal for high volume printing when you don't want to give up quality for speed. Now you can have both. The K-Series makes it possible to print ultra-high quality at speeds that surpass traditional flatbed production speeds.



Kyocera Print Heads

True grayscale, 4.25" wide print heads featuring 2,656 nozzles imaging 3.5, 7, 11, 14 & 21pl drop sizes.

Auto Height Detection System

Automatically detects the height of media up to 4" thick and calibrates print head distance for optimal dot placement and image quality.

LED UV Curing Lamps

Instant curing of UV ink for fast production. Cures on both the left and right pass.

Top Production Speed: up to 800 ft²/hr

Specially engineered combination of print head, inks and LED UV curing technology outputs up to 25 4'x8' boards per hour.

Reversible Vacuum Valve

Reverse the air flow to the table making heavy media easier to handle.

Mechanical Pin Registration System

Pin registration for accurate and consistent media placement.

Power Vacuum & Lamp Switches

On/Off switches for vacuum table and lamps.

Emergency Stop Switches

Stop the printer operation from any corner of the machine.

4-Zone Vacuum System

Eliminates the need for manually zoning the table with scrap material. Individual 4-zone isolation system allows for easy setup of small batch printing.

Full Functioning Control Module

Allows user to adjust printer settings specifically for each ripped file, and make on-the-fly adjustments of ink and media settings, white ink workflow and physical printer settings. Save those settings for repeat runs, eliminating the need to re-rip jobs.

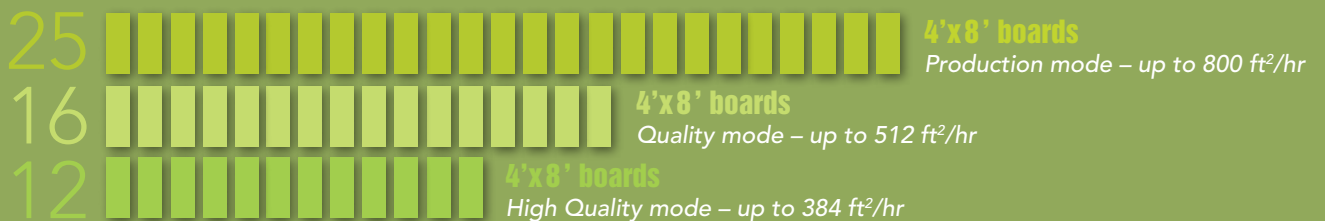
Quality and speed.

The K-Series achieves both with the revolutionary Kyocera print head.



Each of the 2,656 nozzles per the 4.25" wide print head ejects 40,000 drops per second – that's over 100 million drops a minute per print head! Kyocera's unique print head technology enables outstanding image quality by controlling the drop size at 3.5, 7, 11, 14 & 21 picoliter. Plus the unique ink-channel design provides a stable ink supply to all the nozzles for even, continuous printing.

WHAT YOU COULD PRINT IN 1 HOUR WITH THE K-SERIES.



K500 UV Hybrid

3.2m (126") MAX. MEDIA WIDTH

The K-Series K500 hybrid flatbed UV printing press produces high-quality, high volume results on either roll or rigid media. The 3.2m (126") belt-driven vacuum print bed securely and accurately transports flexible or rigid media through the printing press.

Kyocera Print Heads

True grayscale, 4.25" wide print heads featuring 2,656 nozzles imaging 3.5, 7, 11, 14 & 21pl drop sizes.

Auto Height Detection System

Automatically detects the height of media up to 2.25" thick and calibrates print head distance for optimal dot placement and image quality.

LED UV Curing Lamps

Instant curing of UV ink for fast production. Cures on both the left and right pass.

Top Production Speed: up to 800 ft²/hr

Specially engineered combination of print head, inks and LED UV curing technology outputs up to 25 4'x8' boards per hour.

Retractable Alignment Bar

Mechanical alignment bar allows for accurate and consistent media placement.

Vacuum Belt-Driven System

Full width 3.2m (126") vacuum belt provides accuracy and versatility for virtually any size rigid or flexible media.

Emergency Stop Switches

Stop the printer operation from either side of the printer.

On Board Control Module

Allows user to adjust printer settings specifically for each ripped file, and make on-the-fly adjustments of ink and media settings, white ink workflow and physical printer settings. Save those settings for repeat runs, eliminating the need to re-rip jobs.



**THE CET COLOR K-SERIES UV
FIXED TABLE FLATBED & HYBRID
ARE ALL ABOUT DELIVERING THE
ABSOLUTE HIGHEST QUALITY
IMAGING AT JAW-DROPPING
PRODUCTION SPEEDS.**



Printing versatility.

Quickly change setup from roll media to rigid media.

Two included front and rear extension tables can be secured to the main body to facilitate printing on rigid media up to 2.25" thick. The retractable alignment bar aids in rigid media placement, and the vacuum belt-driven printing bed holds media stable while moving it through the printing gantry. Rollers set in the table tops help in gliding rigid media in and out of the printing press.

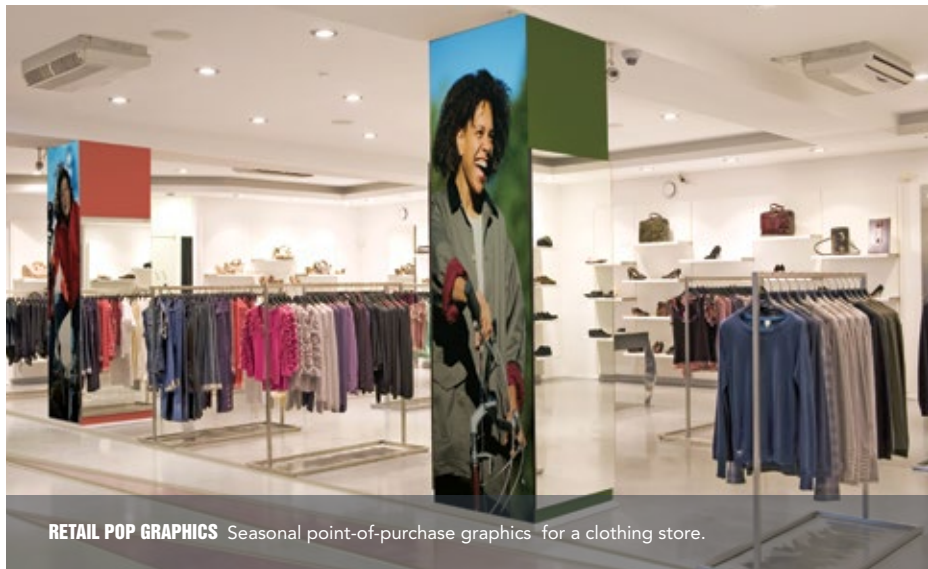


K-SERIES SPECIFICATIONS

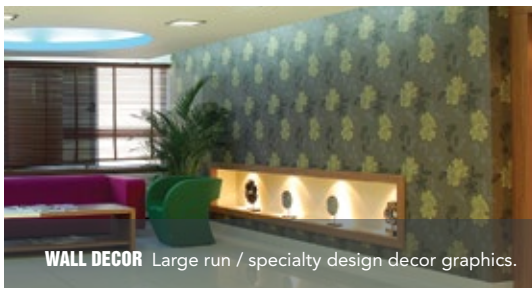
PRINT HEAD	Kyocera
INK SETS	CMYK; CMYK+W
INK TYPE	UV Curable
RESOLUTION	up to 1800 dpi
PRINT SPEEDS	Production: up to 800 ft ² /hr Quality: up to 512 ft ² /hr High Quality: up to 384 ft ² /hr
MEDIA FLATBED (Fixed Table)	Max. Media Size: 60" x 120" Type: Rigid Max. Thickness: 4" Max. Weight: 200 lbs.
HYBRID	Max. Media Size: 3.2m (126") Type: Roll Max. Thickness: 2.25" Max. Weight: 200 lbs.
UV CURING	LED UV Lamps
RIP SUPPORT	Onyx or Caldera
POWER SUPPLY	2 separate Single-Phase, 220V AC circuits rated at 30 amp
ENVIRONMENT	68°F - 86°F / 40% - 90% Rh
DIMENSIONS L W H	K500: 17' x 7' x 4.3' K500hl: 19.5' x 3.4' x 4.4' With 2 flatbed extension tables: 19.5' x 7.4' x 4.5'
MIN. WORK AREA L W	K500: 21' x 11' K500hl: 23.5' x 7.5' With 2 flatbed extension tables: 23.5' x 12.5'
WEIGHT	K500: 3645 lbs. K500hl: 2945 lbs.



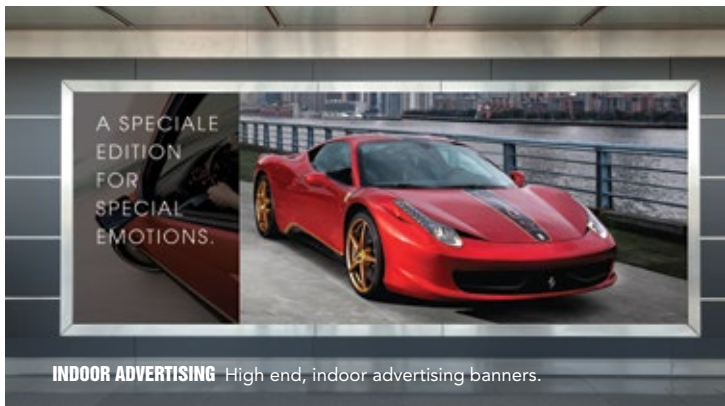
OUTDOOR POSTERS Close-view, backlit posters for outdoor marquees.



RETAIL POP GRAPHICS Seasonal point-of-purchase graphics for a clothing store.



WALL DECOR Large run / specialty design decor graphics.



INDOOR ADVERTISING High end, indoor advertising banners.



CET
COLOR

For additional product information and features, or to request a sample print, contact:
404-228-1259 sales@cetcolor.com

4705 Bakers Ferry Road, Ste. A • Atlanta, GA 30336 cetcolor.com

Scan to visit
cetcolor.com

