



Q5-SERIES Q5-250 | Q5-500 | Q5-1000 | Q5-250h | Q5-500h | Q5-1000h UV PRINTING PRESS



Superior quality, outstanding value!



QUALITY.

Unsurpassed Quality — With variable drop sizes of 5, 10 and 15 picoliter, the Ricoh Gen5 print head on the CET Color Q5-Series printing presses delivers the absolute highest quality imaging available at its price point.



PERFORMANCE.

Unparalleled Performance — Built on our proven flatbed and hybrid technology for simplicity, durability and ease of operation, the Q5-Series printing presses will thrive in your environment and deliver to your expectations.



AFFORDABILITY.

Unbelievably Priced — When compared to similar printers in the market, the Q5-Series line of printing presses feature a considerably lower initial investment cost along with lower long-term operational costs. This adds up to a much shorter return on your investment, allowing profits to start growing sooner.



Ricoh Gen5 Print Heads

Featuring variable dot, true greyscale imaging – 5, 10 and 15pl – at a true native 600 dpi.

Auto Height Detection System

Automatically detects the height of media up to 4" thick and calibrates print head distance for optimal dot placement and image quality.

UV Curing Lamps

Instant curing of UV ink for fast production. Cures on both the left and right pass.

Top Printing Speed: Up to 1152 ft²/hr*

Engineered for high-quality printing yet outputs up to **36 4' x 8' boards an hour** with full bleed capacity. *Q5-1000 with 2 print head rows.

Static Suppression Option

Optional static suppression kit that eliminates static on the substrate.

Reversible Vacuum Valve

Reverse the air vacuum for easier rigid media loading and unloading.

Mechanical Pin Registration System

Pin registration for accurate and consistent rigid media placement.

Power Vacuum & Lamp Switches

On/Off switches for vacuum table and lamps.

Emergency Stop Switches

Stop operation from any corner of the printer.

4-Zone Vacuum System

Eliminates the need for manually zoning the table with scrap material. Individual 4-zone isolation system allows for easy setup of small batch printing.

On Board Control Module

Allows user to adjust printer settings specifically for each ripped file, and make on-the-fly adjustments of ink and media settings, white ink workflow and physical printer settings. Save those settings for repeat runs, eliminating the need to re-rip jobs.

Q5-250 UV Flatbed

3.25'x5' MAX. MEDIA AREA

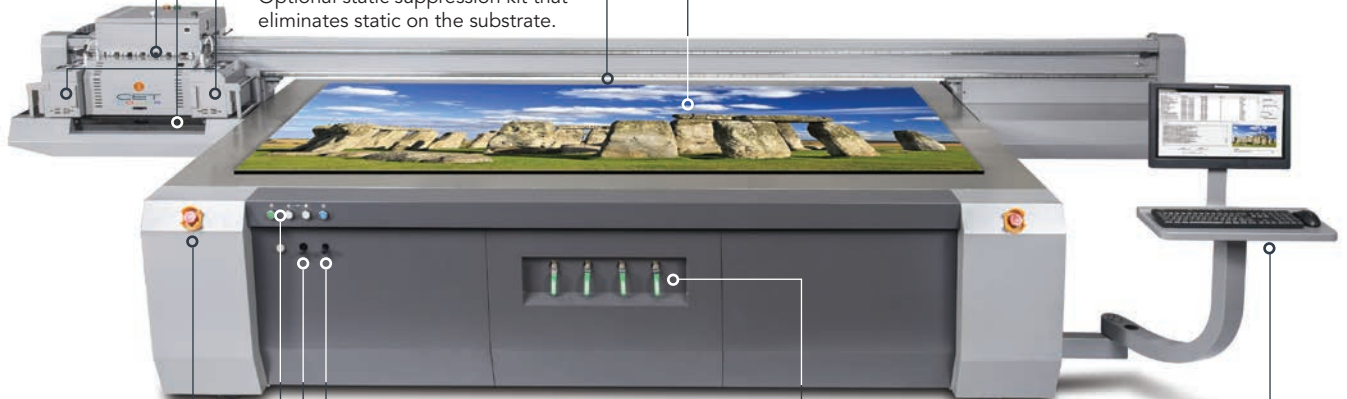
Q5-500 UV Flatbed

4'x8' MAX. MEDIA AREA

Q5-1000 UV Flatbed

5'x10' MAX. MEDIA AREA

The Q5-Series printing presses, with a close-view true native resolution of 600 dpi, are ideal for creating retail point-of-purchase graphics, backlit displays, high-end packaging, art reproduction prints and so much more. Q5-Series printing presses are available with 2 to 10 print heads.



Proven quality and performance with the Ricoh Gen5 print head.

Ricoh's multi-drop technology enables greyscale printing by varying the drop size of each individually printed image pixel. The Ricoh Gen5 print head, installed in the Q5-Series printing presses, features 1280 nozzles per print head. The Gen5 print head prints in true greyscale multi-drop 5, 10 and 15 picoliters at a TRUE native 600 dpi for outstanding, close view print quality.

Along with great print quality, the Gen5 print head also features fast printing speeds on all the Q5-Series printing presses — up to a blazing 960 ft²/hr (Q5-500) and 1152 ft²/hr (Q5-1000) with models that utilize the top level, double-row print head configuration.

3 flatbed sizes, same great features.

Q5-250
3.25' x 5' flatbed



Q5-500
4' x 8' flatbed



Q5-1000
5' x 10' flatbed



Ricoh Gen5 Print Heads

Featuring variable dot, true greyscale imaging – 5, 10 and 15pl – at a true native 600 dpi.

Auto Height Detection System

Automatically detects the height of media up to 2.25" thick and calibrates print head distance for optimal dot placement and image quality.

UV Curing Lamps

Instant curing of UV ink for fast production. Cures on both the left and right pass.

Top Printing Speed: Up to 1152 ft²/hr*

Specially engineered combination of print head, inks and UV curing technology outputs roll or rigid media. *Q5-1000h with 2 print head rows.

Static Suppression Option

Optional static suppression kit that eliminates static on the substrate.

Q5-250h UV Hybrid

64" (1.6m) MAX. MEDIA WIDTH

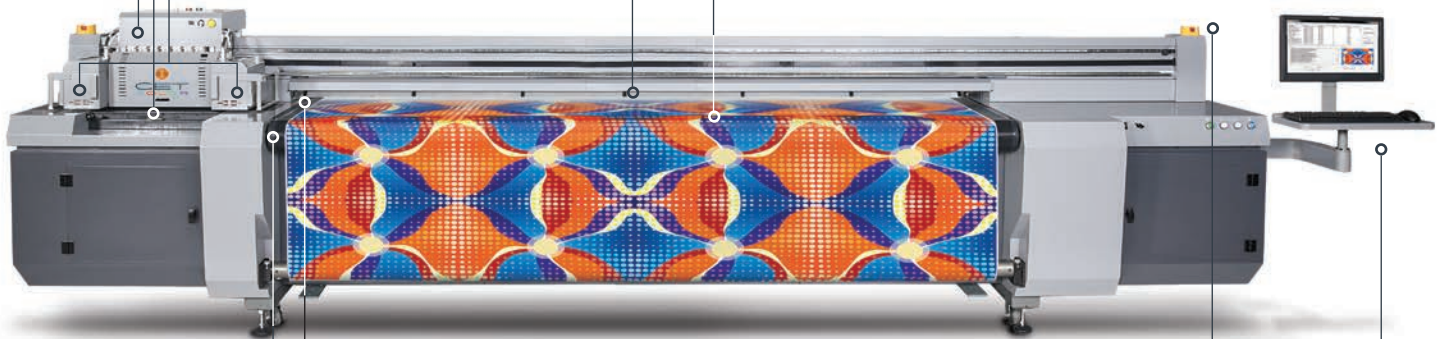
Q5-500h UV Hybrid

98" (2.4m) MAX. MEDIA WIDTH

Q5-1000h UV Hybrid

126" (3.2m) MAX. MEDIA WIDTH

The Q5-Series hybrid UV printing presses produce high-quality, high volume results on either roll or rigid media. The belt-driven vacuum print bed securely and accurately transports flexible or rigid media through the printing press.



Retractable Alignment Bar

Mechanical alignment bar allows for accurate and consistent media placement.

Vacuum Belt-Driven System

Full width vacuum belt provides accuracy and versatility for virtually any size rigid or flexible media.

Emergency Stop Switches

Stop the printer operation from either side of the printer.

On Board Control Module

Allows user to adjust printer settings specifically for each ripped file, and make on-the-fly adjustments of ink and media settings, white ink workflow and physical printer settings. Save those settings for repeat runs, eliminating the need to re-rip jobs.

3 hybrid widths for varied applications.



Q5-250h
Media up to 64"
(1.6m) wide



Q5-500h
Media up to 98"
(2.4m) wide



Q5-1000h
Media up to 126"
(3.2m) wide



Media versatility.

Quickly change setup from roll media to rigid media.

Two front and rear extension tables can be secured to the main body to facilitate printing on rigid media up to 2.25" thick. The retractable alignment bar aides in rigid media placement, and the vacuum belt-driven printing bed holds media stable while moving it through the printing gantry. Rollers set in the table tops help in gliding rigid media in and out of the printing press.

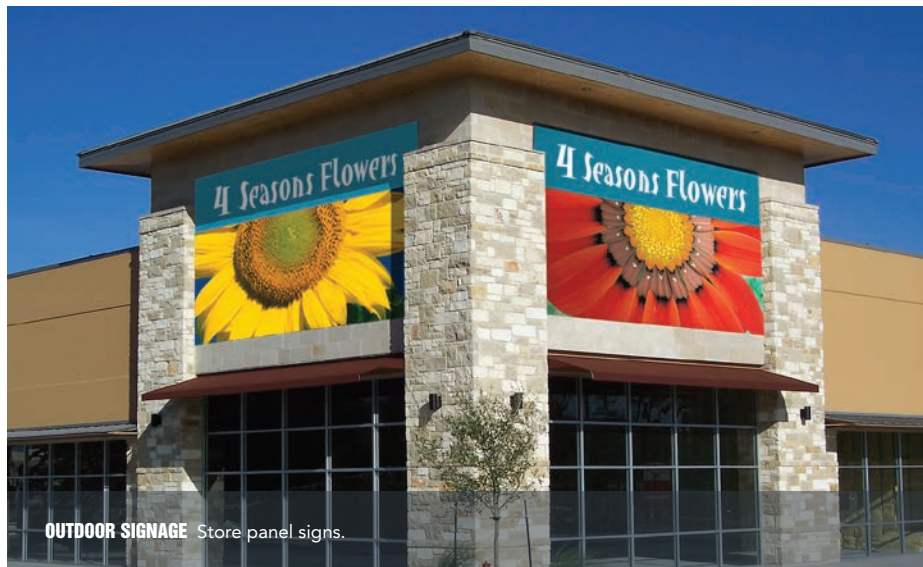


Q5-SERIES SPECIFICATIONS

PRINT HEAD	Ricoh Gen5 2-10 print heads
INK SETS	CMYK+W; CMYKx2+W
INK TYPE	UV Curable
RESOLUTION	True native 600 dpi
PRINT SPEEDS	Q5-250: up to 400 ft ² /hr Q5-500 (1 row): up to 480 ft ² /hr Q5-500 (2 rows): up to 960 ft ² /hr Q5-1000 (1 row): up to 576 ft ² /hr Q5-1000 (2 rows): up to 1152 ft ² /hr
MEDIA - Flatbed	Max. Media Size: Q5-250: 39" x 60" Q5-500: 48" x 96" Q5-1000: 60" x 120" Type: Rigid Max. Thickness: 4" Max. Weight: 200 lbs.
MEDIA - Hybrid	Max. Media Width: Q5-250h: 63" (1.6m) Q5-1000h: 98" (2.4m) Q5-1000hl: 126" (3.2m) Type: Roll; Flexible and Rigid Max. Thickness: 2.25" Max. Weight: 200 lbs.
UV CURING	Mercury Vapor UV Lamps UV LED (optional)
RIP SUPPORT	Onyx or Caldera
POWER SUPPLY	2 separate Single-Phase, 220V AC circuits rated at 30 amp
ENVIRONMENT	68°F - 86°F / 40% - 90% Rh
DIMENSIONS L W H	Q5-250: 10' x 5.5' x 4.2' Q5-500: 15.3' x 6.4' x 4.3' Q5-1000: 17' x 7.2' x 4.4' Q5-250h: 11.3' x 2.8' x 4.2' Q5-500h: 15.9' x 3.3' x 4.4' Q5-1000h: 18' x 4.6' x 4.7'
WEIGHT	Q5-250: 1102 lbs. Q5-500: 2645 lbs. Q5-1000: 3307 lbs. Q5-250h: 1102 lbs. Q5-500h: 2645 lbs. Q5-1000h: 3307 lbs.



RETAIL DISPLAY Vinyl window advertising poster.



OUTDOOR SIGNAGE Store panel signs.



SPECIALTY SIGNAGE Shop sign printed on wood.



For additional product information and features, or to request a sample print, contact:
404-228-1259 sales@cetcolor.com

4705 Bakers Ferry Road, Ste. A • Atlanta, GA 30336 cetcolor.com

Scan to visit
cetcolor.com

